



4-Axis Dental Mill

**DWX-4**



# DGSHAPE DWX-4. Dental Milling Machine.

## DGSHAPE is leading the digital dental revolution.

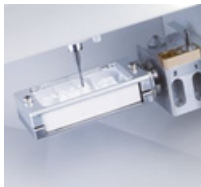
Today, digital dental technologies are transforming every aspect of the dental industry. The days of tedious, manual production of crowns, copings and bridges are fast disappearing. The latest technological advancements in scanning, CAD/CAM software and

CNC milling allow both digital dental labs and clinics to deliver custom production with speed and precision. Better fit and aesthetics promote patient satisfaction, while labs enjoy greater productivity with faster turnaround and optimal accuracy and repeatability.



## Small footprint, big results.

The DGSHAPE DWX-4 is the most compact and user-friendly dental milling machine available. Like its larger family member the DWX-52Di, it is capable of milling a wide variety of materials with reliable precision. Now, you can produce dental prosthetics with consistent accuracy at a very affordable price.

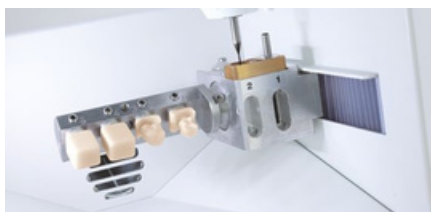


## Built for clinics and labs of any size.

With its small footprint and entry-level price, the DWX-4 is ideal for small and mid-size clinics not yet using digital production tools. It's also perfect for labs needing a second device for urgent jobs that don't tie up their larger production mills. You can economically mill a single crown or small bridge quickly and easily.

## A wide variety of materials.

The DWX-4 is equipped to mill standard blocks and pin-type materials, including wax, PMMA, Zirconia and composite resin.



Showing optional block adapter ZV-4D.

## Powerful yet easy to use.

The DWX-4 combines simultaneous 4-axis milling with simple one-button operation. An automated tool changer provides two tools for precision milling from start to unattended finish. Monitoring production is enhanced by the large viewing area and LED-lit interior. A status light alerts the operator of any errors or malfunction to help prevent wasted time and materials and enabling them to carry out the milling process with confidence.



### Economical open architecture.

Open architecture allows the DWX-4 to work with the latest materials and CAD/CAM software so you're never limited by older technology. If you already have a digital impression solution, the DWX-4 works seamlessly with your existing scanner and compatible CAD/CAM software while eliminating the need to rely on a single source for materials. Compatible with RML-1 and NC code, the DWX-4 interfaces with your computer via USB.



### Virtual Machine Panel.

Unlike traditional CNC mills, Roland has replaced the complex controls with a user-friendly Virtual Machine Panel (VPanel) which operates machine diagnostics and the calibration and milling processes right from your computer desktop. The VPanel also tracks overall machine time for maintenance purposes.

The Ioniser is always active during milling process.



Ioniser off.



Ioniser on.

### Clean cutting area for precision milling.

The DWX-4 is equipped with an integrated air blower that prevents excessive dust build-up and a negative ion generator that neutralises static electricity when milling PMMA. Adding to peace of mind, the DWX-4 can be connected to your chosen dust collection system and sensor that prevents the machine from starting if the vacuum is inadvertently left off.

DWX-4 shown with optional 4 bay tool charger.



### Growth potential.

Highly scalable, the DWX-4 offers multicast capability that allows you to connect up to four DGSHAPE machines to one computer, making it easier than ever to expand your business and increase your production capacity. The DWX-4 dental milling machine lets clinics control the entire process in-house with a single software seat, minimising your investment in time and money.

Specifications		
Cuttable	Material	Zirconia (pre-sintered), wax, PMMA and composite resin
Loadable workpiece shape	Block	Width x Depth: 76×38, Height: 10 to 22 mm
	PIN type	Width x Depth x Height: Maximum 85 x 40 x 22 mm
Operating speed		XYZ axis: 6 to 1800 mm/min.
Spindle motor		Brushless DC motor
Spindle speed		6,000 to 30,000 rpm
Rotary axis travel angle		A: ±360°
Number of tools housed		2 (4 tool adapter ZAT-4D sold separately)
Attachable tool		Shank diameter: 4 mm, Length: 40 to 55 mm
Compatible	compressed	0.02 to 0.2 MPa
	air	USB
Interface		RML-1, NC code
Control command set		AC100 to 240 V ± 10 %, 50/60 Hz, 0.8 to 0.4 A (overvoltage category II, IEC 60664-1)
Power requirements		Approx. 70 W
Power consumption		During operation: 70 dB (A) or less (when not cutting)
		During standby: 40 dB (A) or less
Operating noise		Width x Depth x Height: 340×365×405 mm
External dimensions		22 kg
Weight	Indoor Use, altitude: up to 2000 m	
	Temperature: 5 to 40 °C	
Installation Environment	Relative humidity: 35 to 80 % (no condensation)	
	Ambient pollution degree: 2 (as specified by IEC 60664-1)	
	Short-Term Temporary Overvoltage: 1440 V	
	Long-Term Temporary Overvoltage: 490 V	
Included items		Power cord, USB cable, Manual, Software Package CD-ROM, Detection pin, Automatic correction jig, Clamp for block workpiece, Hexagonal screwdriver, spanner, Tool holder, Tool positioner, Dust collection hose, Regulator.

System Requirements for USB	
Connection	Windows 10, 8.1, 7 (32 or 64 bit) or an upgraded computer originally preinstalled with Windows 7 or later
Computer USB cable	Use the included USB cable

Options		
Item	Model	Description
4-Position ATC *1 *2	ZAT-4D	Number of tools housed: 4 Loadable workpiece shape: PIN type (small) Loadable workpiece supported: PIN type (small)
Multi-Pin Clamp *2	ZV-4D	Number of loadable workpieces: max. 4 Loadable workpiece sizes: For 4 workpieces (Width x Depth x Height): Max. 14,5 x 21 x 20 mm For 3 workpieces (Width x Depth x Height): Max. 20 x 21 x 20 mm
Spindle Unit	ZS-4D	For replacement
Milling Bur	ZDB-100D	R1,0 mm billing bur for composite resin (2 mm diameter)
	ZDB-50D	R0,5 mm billing bur for composite resin (1 mm diameter)
	ZDB-30D	R0,3 mm billing bur for composite resin (0.6 mm diameter)

\*1 The 4-position ATC works with Roland's Virtual Machine Panel (Vpanel) ver. 1.1 or later  
 \*2 The multi-pin clamp cannot be used simultaneously with the 4-position ATC

Roland DG reserves the right to make changes in specifications, materials or accessories without notice. Your actual output may vary. For optimum output quality, periodic maintenance to critical components may be required. Please contact your Roland dealer for details. No guarantee or warranty is implied other than expressly stated. Roland DG shall not be liable for any incidental or consequential damages, whether foreseeable or not, caused by defects in such products. Three-dimensional shapes may be protected under copyright. All trademarks are the property of their respective owners. Roland DG Corp. has licensed the MMP technology from the TPL Group.



# DGSHAPE EMEA appendix | DISC ADAPTER |



## Unleash your potential.

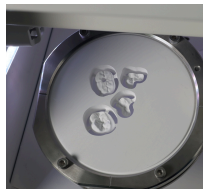
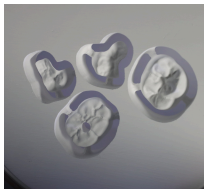
Widespread adoption of inhouse milling amongst dental labs has increased the global demand for high quality zirconia.

Improvements in surface smoothness, high translucency and faster sintering times ensures zirconia will remain the most popular restoration material with dental professionals.



## Disc adapter.

With the disc adapter, you can benefit from the widest **CHOICE** of materials and **SAVE** money with a truly open approach to working with your preferred material suppliers.



## Batch produce.

Now you can do **MORE** by batching your production, and milling multiple cases from the same material disc.

The CAM software will save your part used disc so you can fill up the gaps with future jobs, maximising your material usage.

## Pain-free ownership.

Inhouse milling has never been **EASIER**. Dry milling has always been the first step for labs to digitalise their production. Now clinics can also benefit from this faster learning curve and stress-free production.

Roland DG entered the dental market in 2010.

In 2017, Roland DG created a wholly-owned subsidiary, DGSHAPE Corporation, to dedicate time, energy, and staff solely toward the development of innovative dental solutions.

Today, DGSHAPE continues to expand its customer base by offering solutions to dental laboratories and clinics all over the world.

*The Disc adapter is available within DGSHAPE EMEA Sales territory.*

*Please contact for availability in your Country*

