



DGSHAPE CLOUD

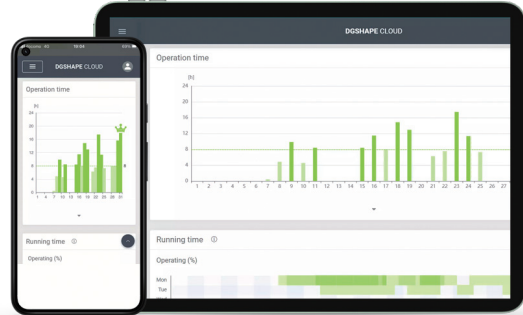
**World-Class Applications
The Future for Your Dental Business**



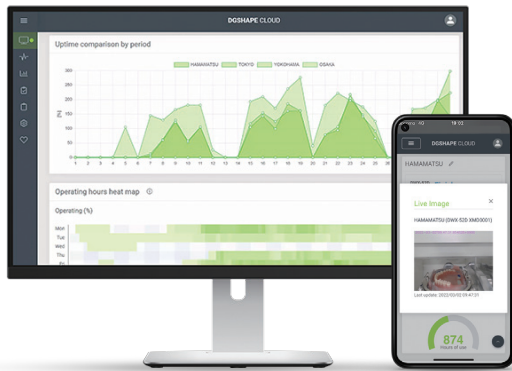
DGSHAPE CLOUD

Advanced Support

DGSHAPE CLOUD offers an improved device support platform built to keep your milling centers running with minimal downtime. Monitor the job queue and access live image and recorded video during your production hours. Use a step-by-step protocol to keep your devices operating at maximum efficiency.



*Camera must be purchased separately to see the image/video.

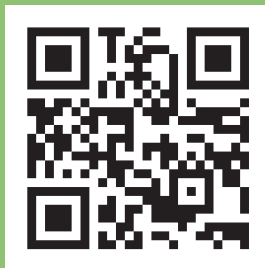


Monitor Your Milling Center From Anywhere

Having access to remote monitoring capabilities is critical to maintaining the highest level of productivity. The new remote access feature allows you to view unit output, utilization and completed jobs, and offers support for your device while you are away from your milling center.

*DGSHAPE CLOUD is compatible with DWX-53DC, DWX-52DCi, DWX-52DC, DWX-52D, DWX-42W.

Scan to create your DGSHAPE Account and get access to DGSHAPE CLOUD



DGSHAPE BRAND PROMISE

DGSHAPE Corporation is a wholly owned subsidiary of Roland DG Corporation, established in 2017 to develop and market innovative fabrication technology worldwide. With 30 years' experience in innovative 3D design, DGSHAPE's core mission to "make innovation, make life better" is focused on delivering digital technologies that brings ideas to life, revolutionize business processes, and shape a better future.